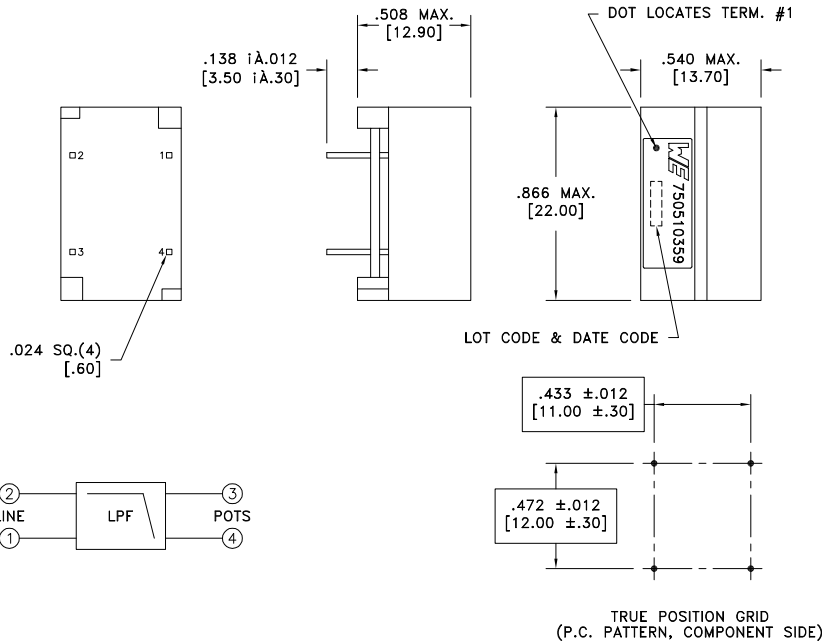


| | | |
|----------------------|------|---------------|
| CUSTOMER TERMINAL | RoHS | LEAD(Pb)-FREE |
| Sn96.5, Ag3%, Cu0.5% | Yes | Yes |

more than you expect



6C ELECTRICAL SPECIFICATIONS:

| PARAMETER | TEST CONDITIONS | VALUE |
|-----------------------|-----------------|--------------|
| D.C. RESISTANCE | @20°C | 25 ohms max. |
| LONGITUDINAL BALANCE | 0.2 - 3.0kHz | -58dB max. |
| FREQUENCY RESPONSE | 0.2 - 4.0kHz | ±1.5dB |
| INSERTION LOSS | 1004Hz, CO | -0.75dB max. |
| INSERTION LOSS | 1004Hz, CPE | -0.6dB max. |
| 6B RETURN LOSS | 200Hz | 5dB min. |
| 6B RETURN LOSS | 1kHz | 8dB min. |
| 6B RETURN LOSS | 2.2kHz | 5dB min. |
| LINE IMPEDANCE | 0.2 - 4kHz, CO | 900 ohms |
| LINE IMPEDANCE | 0.2 - 4kHz, CPE | 600 ohms |
| STOP BAND ATTENUATION | 30k - 300kHz | -65dB min. |
| STOP BAND ATTENUATION | 300k - 30MHz | -55dB min. |
| GROUP DELAY | 0.6 - 3.2kHz | 200uS max. |
| GROUP DELAY | 3.2 - 4.0kHz | 250uS max. |
| NEAR-END CROSSTALK | 1kHz - 30MHz | -65dB max. |

GENERAL SPECIFICATIONS:

6C OPERATING TEMPERATURE RANGE: -40°C to +85°C.

LOOP CURRENT: 100mADC

DETAILS SUBJECT TO CHANGE

| | | | | | | | |
|------|------|----------------------------------|--|--|---------------------------|------------------|----------------------------|
| REV. | DATE | Packaging Specifications Method: | | Tolerances unless otherwise specified: Angles: ±1° Fractions: ±1/64 Decimals: ±.005 [.13] Footprint: ±.001 [.03] | DRAWING TITLE | PART NO. | |
| 6C | 4/12 | www.we-online.com/midcom | | This drawing is dual dimensioned. Dimensions in brackets are in millimeters. | DSL MODULE ANSI | 750510359 | |
| 6B | 6/11 | | | | eiSos p/n: 750510359 | compliant RoHS | SPECIFICATION SHEET 1 OF 1 |
| 6A | 5/11 | SEE REVISION SHEET FOR | | | | | |